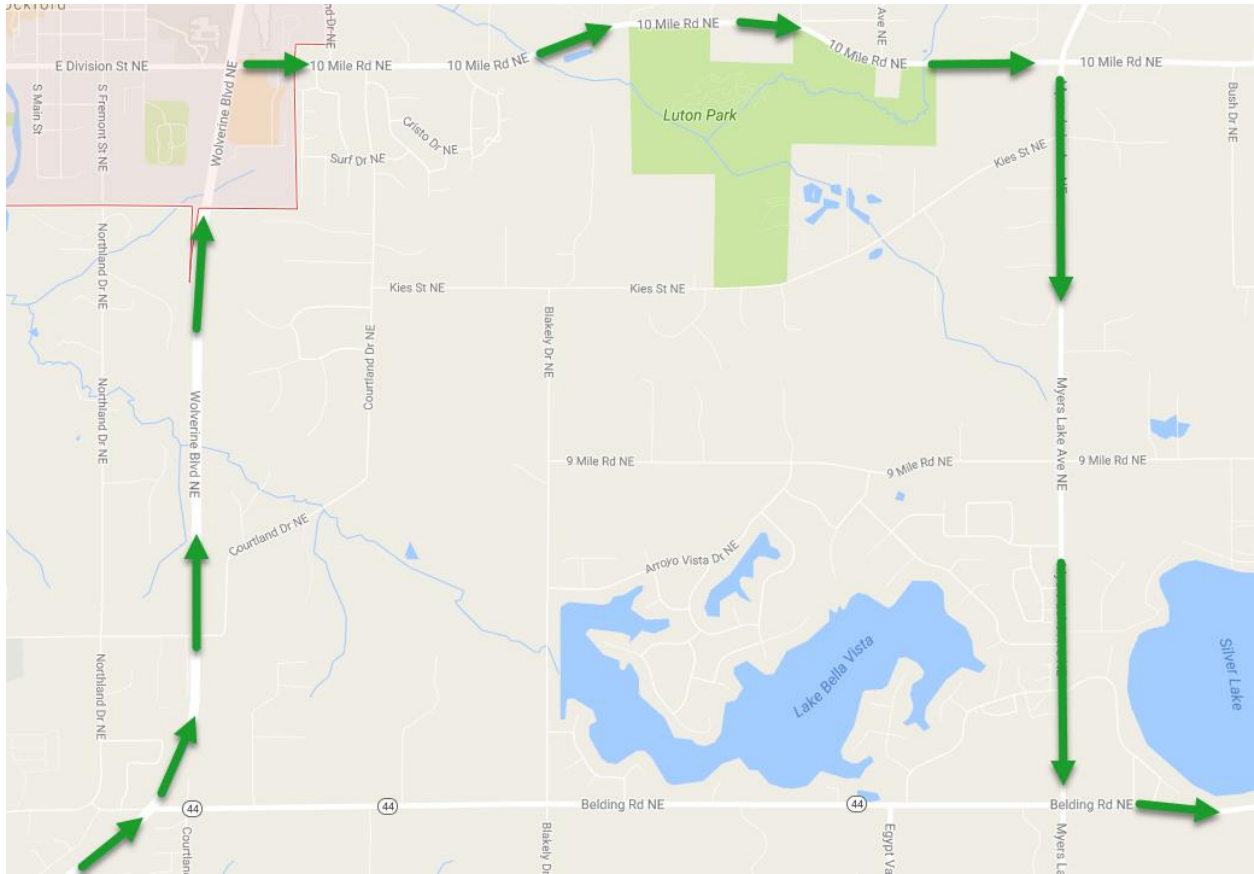
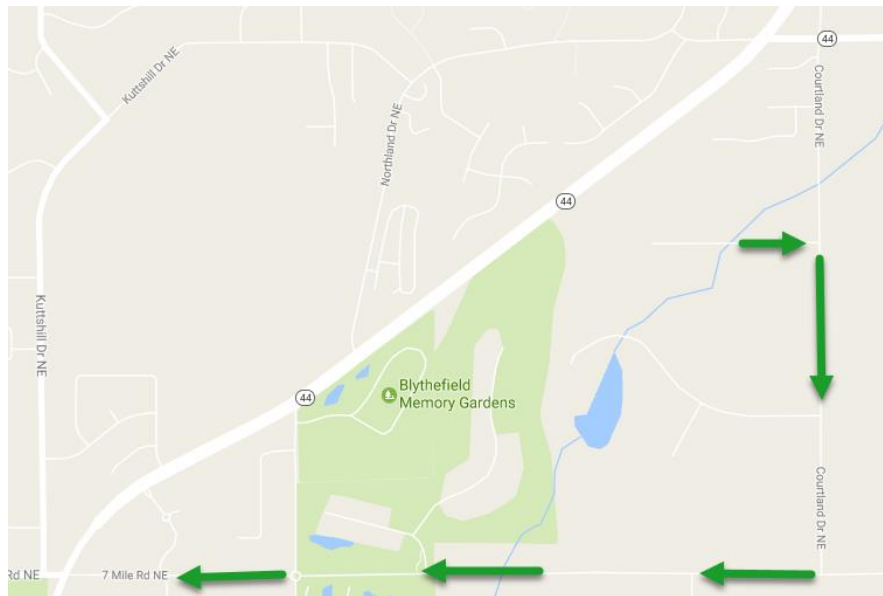


EB M-44 Detour: Eastbound traffic will be detoured off M-44 at Wolverine Blvd, continuing north on Wolverine Blvd to 10 Mile Road, then east on 10 Mile Road to Myers Lake Road, then south on Myers Lake Road back to M-44.



Courtland Detour: Courtland Drive traffic will be detoured south of M-44 for four days. The detour route will be south on Courtland Drive to 7 Mile Road, then west on 7 Mile Road to Wolverine Boulevard.



For up-to-date information on this project, go to the list of statewide lane closures at:

www.michigan.gov/drive