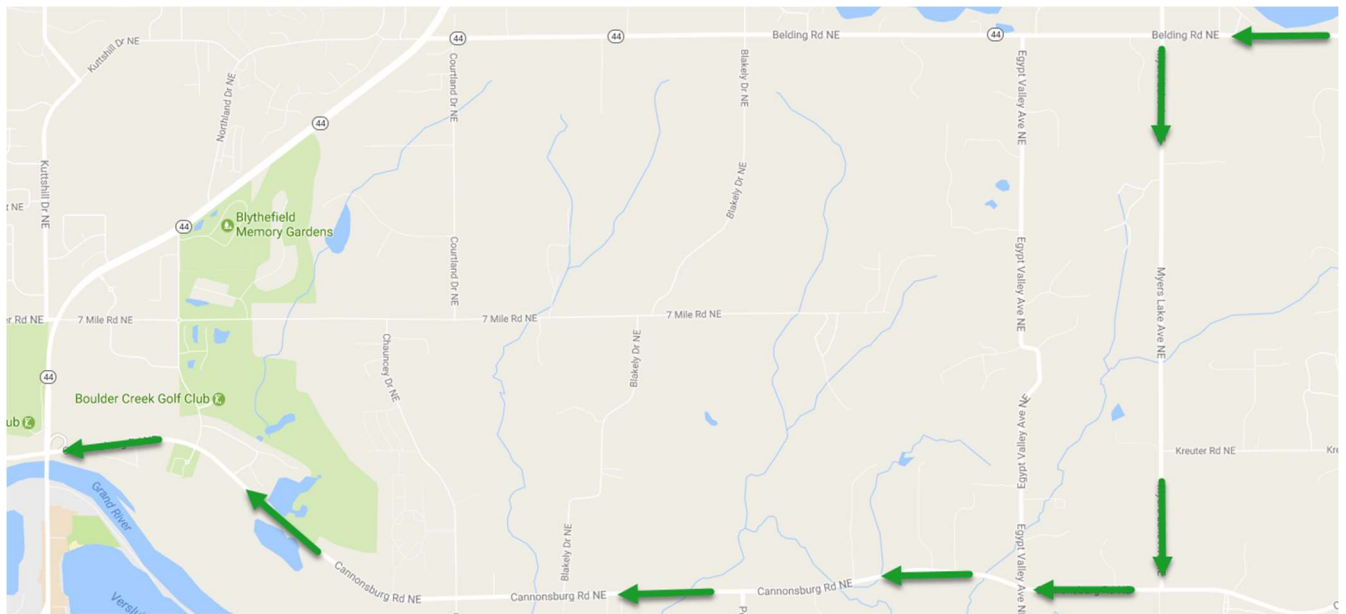




Michigan Department of Transportation

2017 Road Construction Project

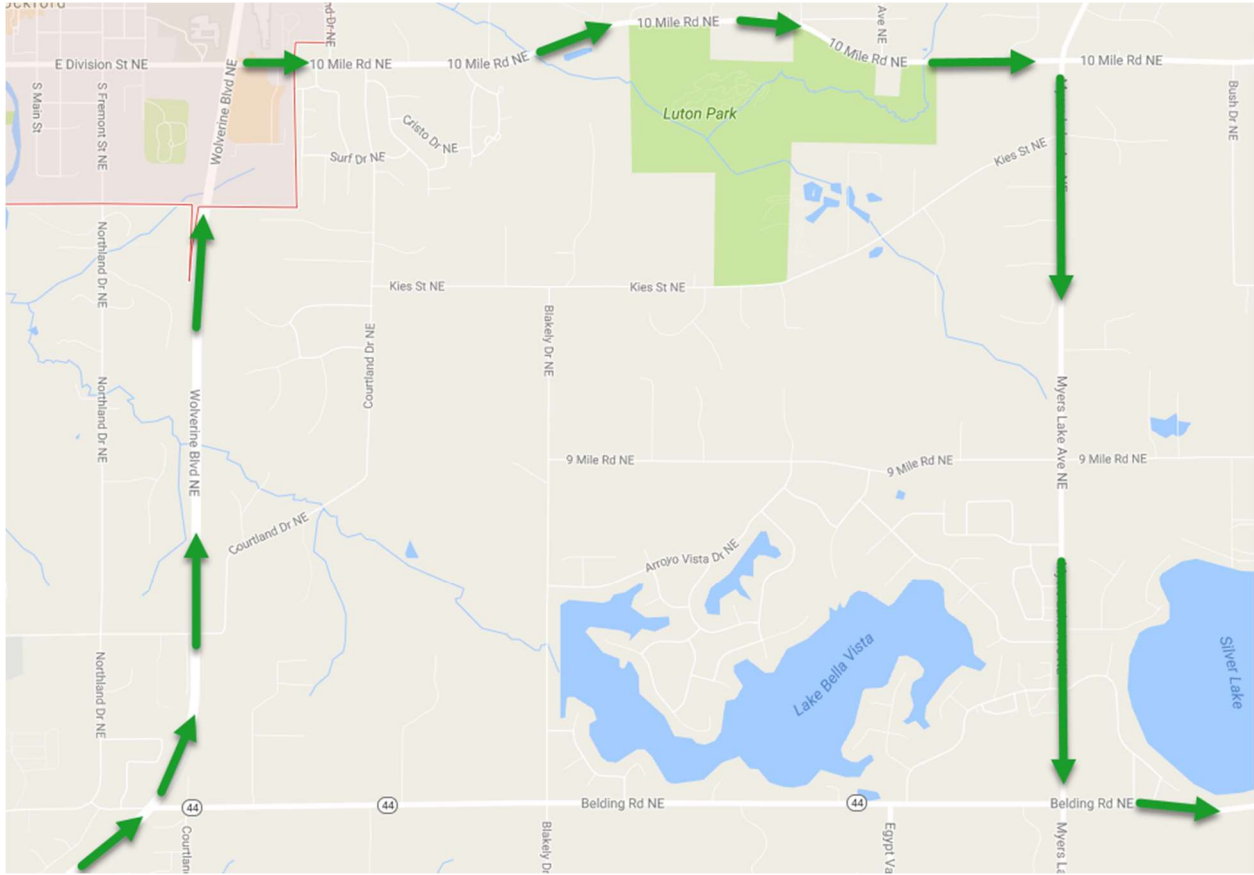
- Description:** Hot mix asphalt roadway reconstruction including widening, vertical grade corrections, and sanitary sewer replacement on M-44 from Wolverine Boulevard east to Myers Lake Avenue.
- Location:** M-44 from Wolverine Boulevard east to Myers Lake Avenue, Plainfield and Cannon Townships, Kent County.
- Cost:** \$4.95 million
- Schedule:** Work is scheduled to begin in April of 2017 and be completed by September of 2017. The reconstruction work from Wolverine Blvd to Blakely Drive is scheduled to begin in May of 2017 and be completed by August of 2017.
- Traffic:** Two-way traffic on M-44 will be maintained at all times when a detour is not in place. One primitive EB lane (gravel path) for local and emergency traffic will be maintained during the detours. Detour traffic will be maintained from May of 2017 to August of 2017 as detailed and shown on the attached maps.
- WB M-44 Detour:** Westbound traffic will be detoured off M-44 at Myers Lake Avenue, continuing south on Myers Lake Avenue to Cannonsburg Road, then west on Cannonsburg Road to Wolverine Boulevard.



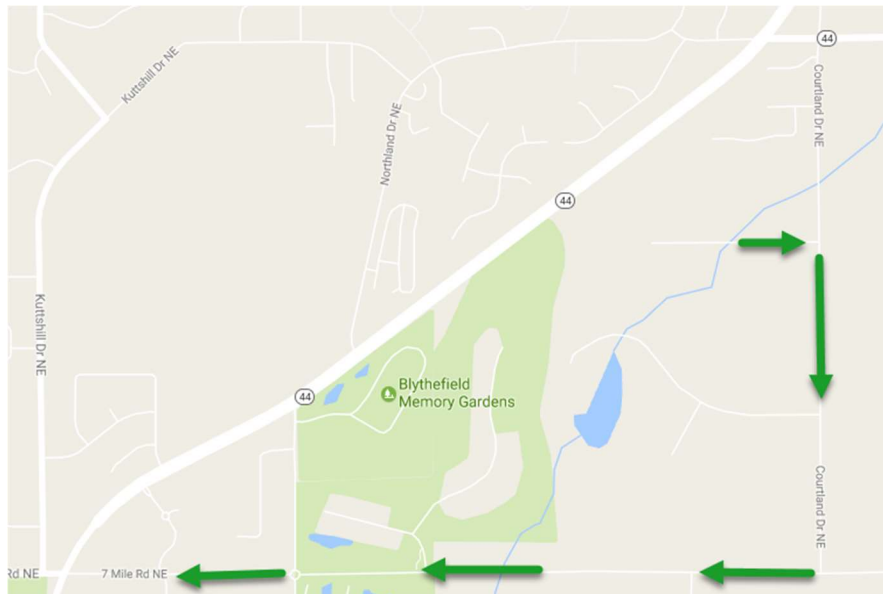
For further information on this project or other MDOT projects in Allegan, Barry, Ionia and Kent counties, contact the Grand Rapids Transportation Service Center (TSC) at:

**MDOT Grand Rapids TSC**  
2660 Leonard St. NE  
Grand Rapids, MI, 49525  
616-464-1800

**EB M-44 Detour:** Eastbound traffic will be detoured off M-44 at Wolverine Blvd, continuing north on Wolverine Blvd to 10 Mile Road, then east on 10 Mile Road to Myers Lake Road, then south on Myers Lake Road back to M-44.



**Courtland Detour:** Courtland Drive traffic will be detoured south of M-44 for four days. The detour route will be south on Courtland Drive to 7 Mile Road, then west on 7 Mile Road to Wolverine Boulevard.



For up-to-date information on this project, go to the list of statewide lane closures at:  
[www.michigan.gov/drive](http://www.michigan.gov/drive)